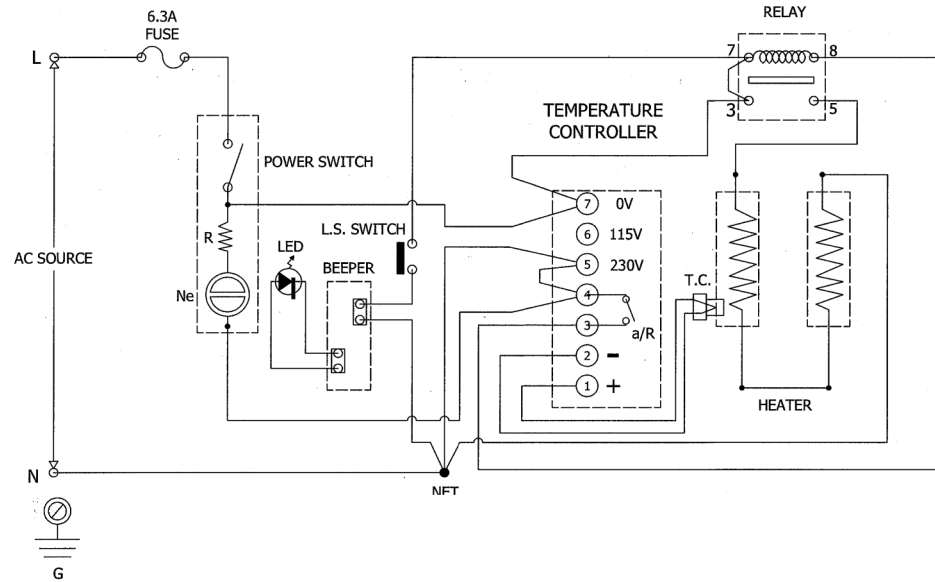
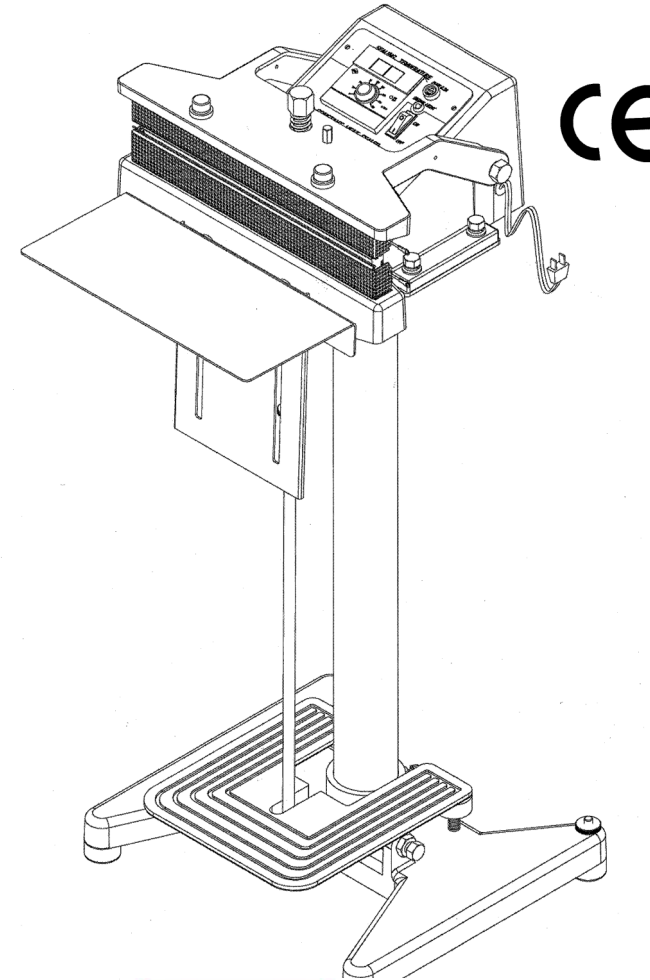


8. ELECTRIC CONNECTION DIAGRAM



CONSTANT HEAT SEALER

VHS/III 200, 300, 400, 600



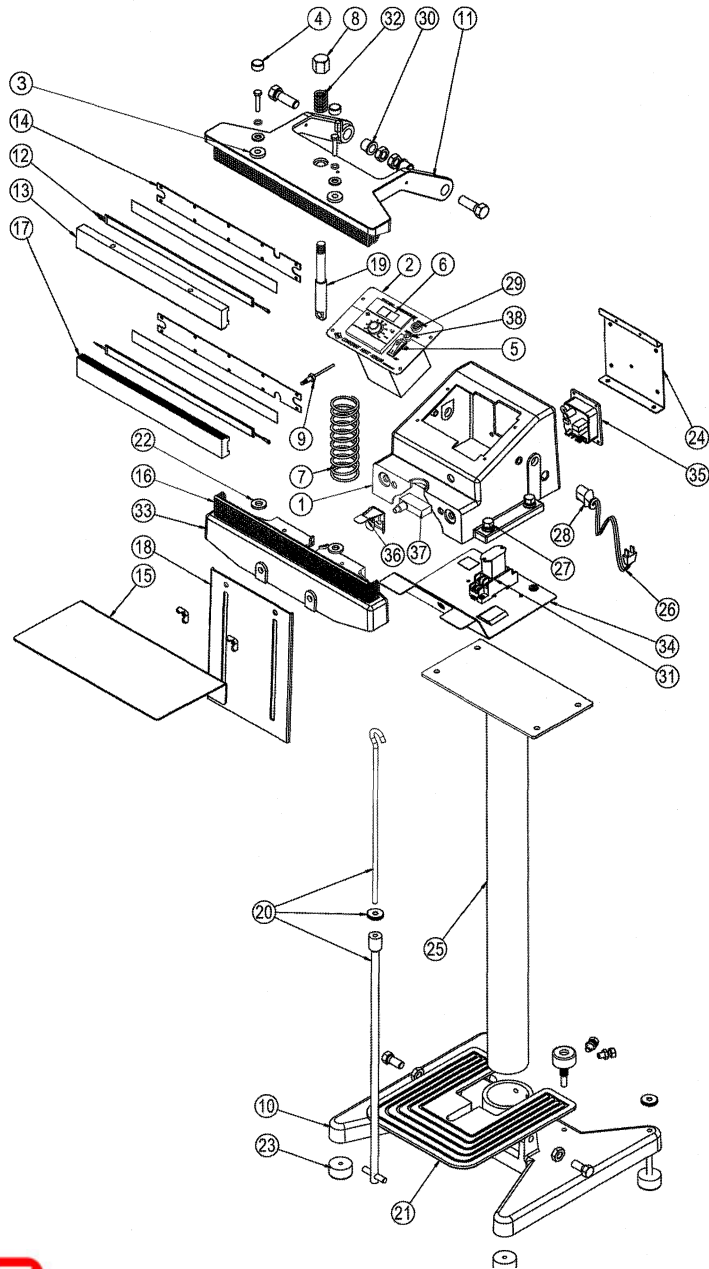
9. SPECIFICATIONS

Model No.	VHS/III 200	VHS/III 300	VHS/III 400	VHS/III 600
Max Seal Length	200mm	300mm	400mm	600mm
Seal Width	15mm	15mm	15mm	15mm
Max Seal Thickness	2 x 0.25mm	2 x 0.25mm	2 x 0.25mm	2 x 0.25mm
Heat Timer	1.5 sec	1.5 sec	1.5 sec	1.5 sec
Temp Range	30° ~ 200°	30° ~ 200°	30° ~ 200°	30° ~ 200°
Input Type	Thermocouple K	Thermocouple K	Thermocouple K	Thermocouple K
Power	250W	350W	420W	540W
Weight	21Kg	22Kg	23Kg	26Kg



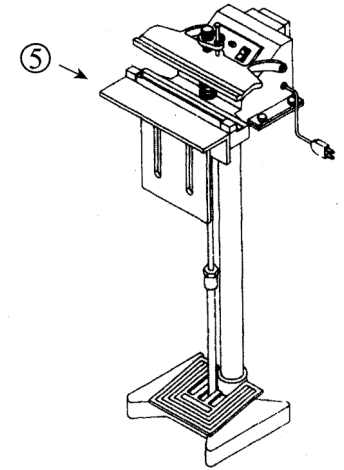
02 9452-3566
sales@getpacked.com.au

1. CONSTRUCTION DIAGRAM



5. Fit working plate over adjust bracket.

Note : When attaching working platform to chassis, ensure there is sufficient space between lower sealing jaw and fastening wing nuts so the working plate can be easily attached.



7. CAUTIONARY MARKING

CAUTION:

1. To reduce the risk of electrical shock, disconnect the machine from the wall socket before any maintenance work or replacement of heating element.
2. To provide continued protection against risk of electric shock, only plug machine into ground wall socket.
3. If power cable is damaged, replace cable immediately which is available from manufacturer or agent.

WARNING:

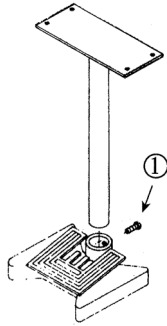
1. A heating element is located in the jaw under the pressure jaw. Use caution during operation. DO NOT TOUCH THE JAW.
2. For continued protection against fire or electric shock, always replace fuse with recommended type and rating.



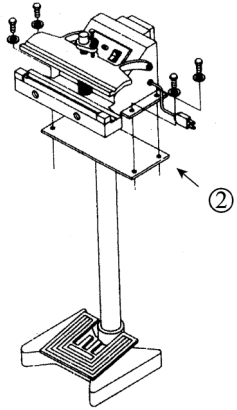
02 9452-3566

sales@getpacked.com.au

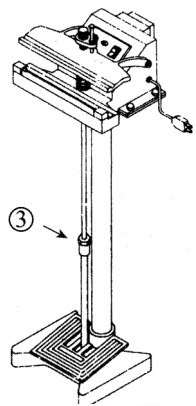
6. ASSEMBLING FOOT SEALER



1. Insert standing tube into pedal base and fix with short screws.

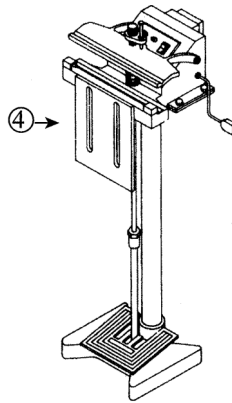


2. Use 4 long screws to connect enclosure body to stand tube.



3. Attach puller rod to puller (found under enclosure body) and attach to foot pedal.

4. Connect fixed adjusting bracket to lower sealing jaw.



2. PARTS LIST

- | | |
|--|------------------------------|
| 1. Enclosure body | 20. Lower Lever |
| 2. Control Panel | 21. Foot Pedal |
| 3. Silicon Rubber Pad | 22. Fibre Washers |
| 4. Hats for Jaw Screw | 23. Rubber Foot |
| 5. Power Switch | 24. Back Plate |
| 6. Temp. Control Knob | 25. Standing Tube |
| 7. Return Spring | 26. Power Plug |
| 8. Upper Lever Nut | 27. Screw for Enclosure Body |
| 9. Temperature Couple | 28. Strain Relief Bushing |
| 10. Pedal base | 29. Fuse Holder |
| 11. Upper Pressure Jaw | 30. Flange for Upper Jaw |
| 12. Heating Band | 31. Relay & Socket |
| 13. Upper Heating Jaw | 32. Pressure Spring |
| 14. Fixing Plate for Heating Element | 33. Lower Jaw Base |
| 15. Working Plate/Platform | 34. Bottom Cover |
| 16. Protection for Heating Jaw | 35. Beep PCB Set |
| 17. Lower Heater Jaw | 36. Interlock Set |
| 18. Working Adjusting Plate (only for 300/400) | 37. Limit Switch |
| 19. Working Adjusting Plate | 38. Pilot Lamp |



02 9452-3566

sales@getpacked.com.au

3. OPERATING INSTRUCTION

After the machine is fully assembled and plugged into an outlet, do the following :

1. Adjust the foot pedal rod (#20 Down Lever) to obtain a firm contact of the jaws.
2. Turn on the main switch (#05) to ON position, Yellow light appears.
3. Adjust the temperature control knob (#06) to 100°C, the green neon will change to red in approximately 2 minutes – this is the heating time.
4. Press the foot pedal (#21) down to seal, sealing pilot lamp (#38) will come on – this is the sealing time. Release the pedal about 1 second after the lamp goes off and the beep is heard.
5. If sealing is not achieved, then turn the temperature control knob (#06) to a slightly higher temperature and repeat step 4.
6. FOR SAFETY REASONS, KEEP HANDS FINGERS AWAY FROM SEALING JAWS AT ALL TIMES.

4. HELPFUL INFORMATION

1. Always keep sealing platform clean, remove any residue build up on heating jaws.
2. Do not clean sealing platform with any fluids or chemicals.
3. Perform regular checks of the condition of both sides of heater jaws. A jaw in poor condition will negatively affect the quality of seal.

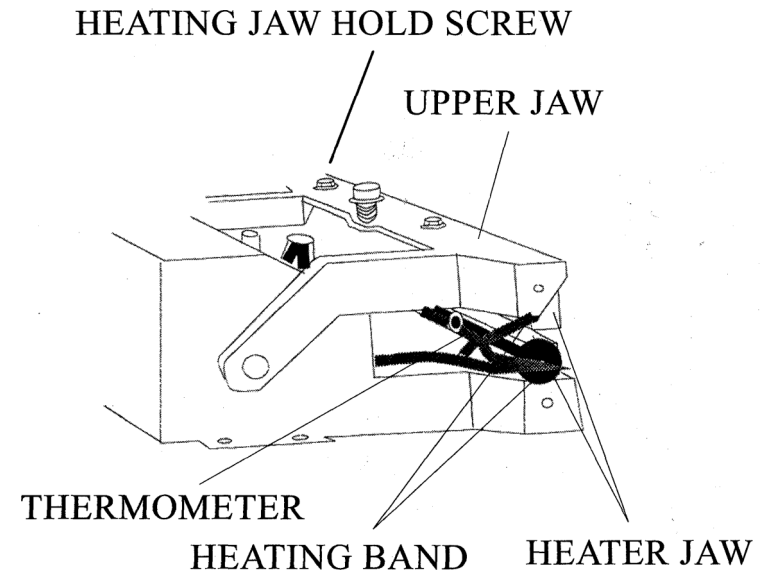
5. CHANGING PARTS

To replace faulty element, follow these instructions :

REMOVE PLUG FROM WALL SOCKET

ONLY USE GENUINE REPLACEMENT PARTS

1. Remove 4 screws on temperature control panel and lift up temperature control from machine.
2. Disconnect element wire from terminal block.
3. Remove element from upper and/or lower jaw.
4. Fit new element to upper and/or lower jaw.
5. Connect element wires to terminal block.
6. Refit temperature control unit to machine and fasten 4 screws on temperature control panel.



02 9452-3566

sales@getpacked.com.au